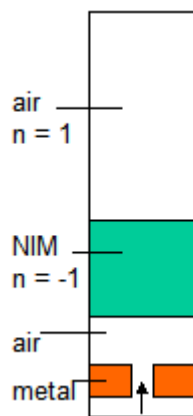
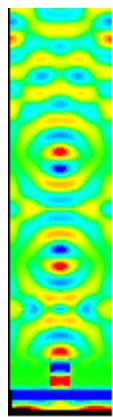


# Simulation of Negative Index Material (NIM) Slab Superlens

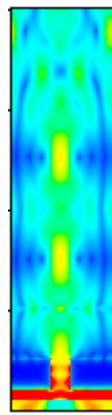
This example simulates superlens imaging of periodic slits in a metal film illuminated by a planewave. The superlens is a slab of negative index material (NIM). Note in the instant fields animations, the EM field phase in the NIM slab moves in the opposite direction of that in air.



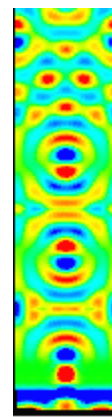
Geometry



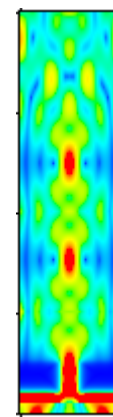
Instant Ex  
Animated GIF



Ex Amplitude



Instant Ey  
Animated GIF



Ey Amplitude